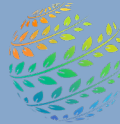




Food Systems Investing Webinar Series

12 October 2022

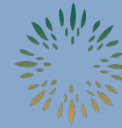
Access Livelihoods



TIFS
TRANSFORMATIONAL INVESTING
IN FOOD SYSTEMS



GLOBAL
ALLIANCE
FOR THE
**FUTURE
OF
FOOD**



**AGROECOLOGY
FUND**

Disclaimer

By accepting this presentation, recipients acknowledge that they have read, understood and accepted the terms of this disclaimer.

This presentation does not constitute an offer to sell or a solicitation for an offer to buy the securities, assets or business of any company or business described herein. This presentation is being provided for informational purposes only. No representation or warranty, express or implied, is or will be given by the presenter, any of the companies described herein, or any of their affiliates, directors, officers, partners, employees, agents or advisers or any other person as to the accuracy, completeness, reasonableness or fairness of any information contained in this presentation and no responsibility or liability whatsoever is accepted for the accuracy or sufficiency thereof or for any errors, omissions or misstatements, negligent or otherwise, relating thereto. No information included in this presentation constitutes, nor can it be relied upon as, legal, tax, investment or other advice. The presenter makes no recommendation regarding any investment in any of the businesses described herein, and recipients should consult their independent advisors regarding any such investment, partnership or other similar transaction. In all cases, interested parties should conduct their own investigation and analysis of the information contained herein.

This presentation contains forward-looking statements that are subject to risks, uncertainties and other factors. All statements other than statements of historical fact or relating to present facts or current conditions included in this presentation are forward-looking statements. You can identify forward-looking statements by the fact that they do not relate strictly to historical or current facts. These statements may include words such as “anticipate,” “estimate,” “expect,” “project,” “seek,” “plan,” “intend,” “believe,” “contemplate,” “assume,” “will,” “may,” “could,” “would,” “continue,” “likely,” “should,” and other words and terms of similar meaning in connection with any discussion of the timing or nature of future operating or financial performance or other events, but not all forward-looking statements contain these identifying words. Risks, uncertainties and other factors may cause future results to differ materially from these forward-looking statements, and potentially adversely from the historical results contained herein.

All information contained herein speaks only as of the date hereof. The presenter does not undertake any duty to update or revise the information contained herein, publicly or otherwise. The presenter has not independently verified any third party information and makes no representation as to the accuracy or completeness of any such information.

Purpose and Agenda

Purpose of the Series: showcase business, service provider, and financial models that use holistic approaches to creating just and sustainable food systems

Today's Agenda:

- Welcome and Intro to Investing in Systems Transformation (5 minutes)
- Access Livelihoods; Transforming the lives of rural women in India by Krishnagopal GV, CEO, Access Livelihood (15 minutes)
- Observations from a funder and investor by Emmanuel Murray, Investment Director, Caspian (10 minutes)
- Reflections from an social investment pioneer by Kartik Desai, Founder, Desay & Associates (10 minutes)
- Discussion with participants (29 minutes)
- Next steps and adjourn (1 minute)

Access Livelihoods (ALC) – A Pre-Due Diligence Assessment by TIFS

ALC incubates women-owned climate resilient enterprises to disrupt a fragmented supply chain through providing end-to-end services for women producers and artisans

Founded: 2005

Location: Hyderabad (expanding from 6 to 10 cities in 7 states in India)

Scale: 1 million outreach; 75,000 households directly impacted with core services across 68 collective women-owned enterprises

Natural Capital:

- 75,000+ households adopting organic and sustainable farming

Social Capital:

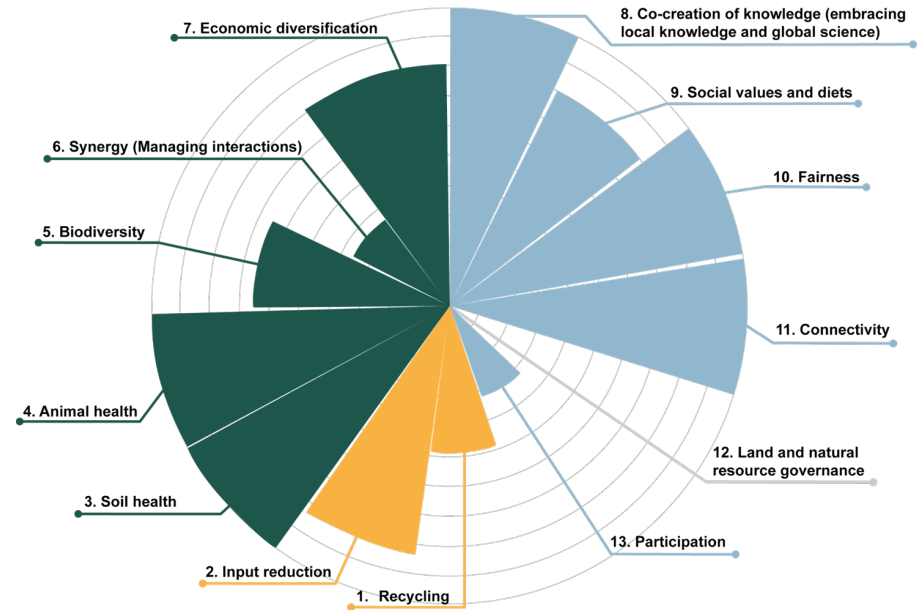
- 68 collective women-owned enterprises incubated
- 17 enterprises accelerated

Human Capital:

- 19,000+ participants across all education programs

Produced Capital:

- 2-3.5x increase in annual income of small-scale women producers
- 7 agri-processing hubs established
- USD735,000 revenue FY21-22



Transformative potential:

Amplifying Within ✓

Capitalizing better on existing opportunities, stabilizing, professionalizing and/or speeding up.

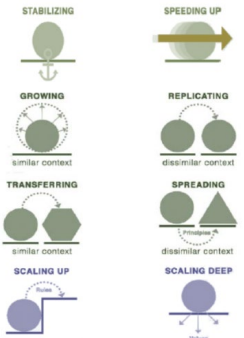
Amplifying Out ✓

Growing in scale, replicating or starting new commercial activities in other contexts.

Amplifying Beyond ✕

Changing values and norms
Advocating, lobbying for-, networking for-, or supporting the discourse of agroecology and attempting to codify the impact into law, policy, or institutions.

Scaling Processes



Past and Upcoming Events

For more information about Access Livelihoods, India contact Krishnagopal GV, CEO
(krishnagopal.grandhi@alcindia.org)

Upcoming Events:

27 October 2022 - Community Markets for Conservation, Zambia

9 November 2022 - The Regeneration Fellowship and the Agroecology Accelerator, East Africa

1 December 2022 – Northern Cooperative Development Bank, Sri Lanka