



COMACO
Community Markets for Conservation

The Model, The Company,
The Impact, The Future

























Export
products

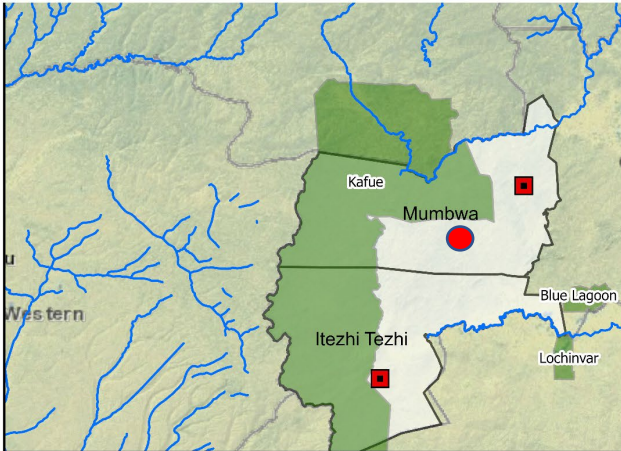
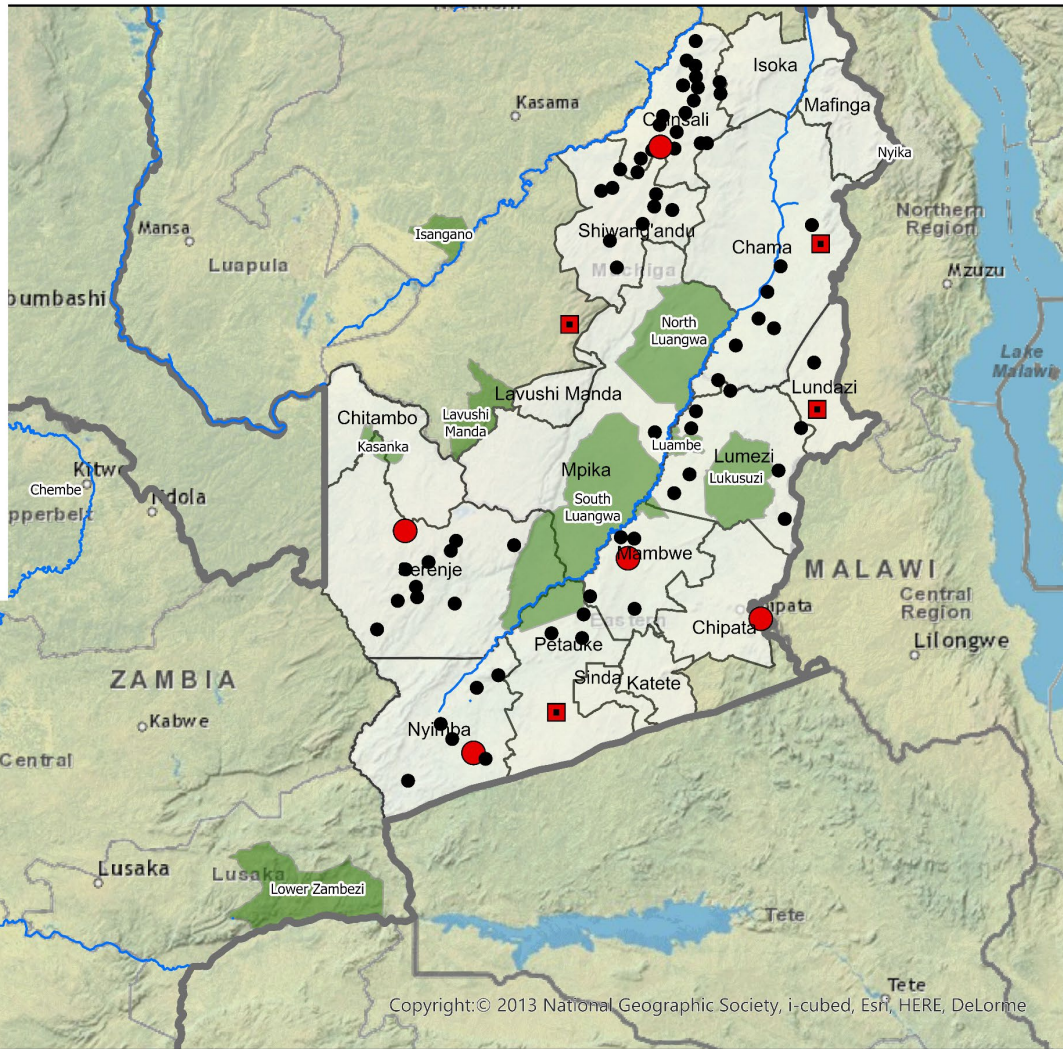


Local
products

Legend

COMACO Infrastructure

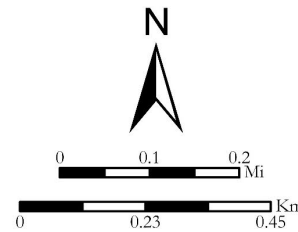
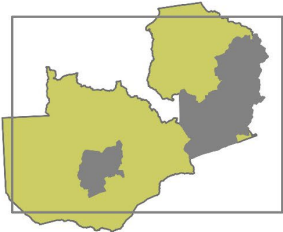
- Cooperative Depot
- Farmer Support Centre
- Manufacturing Plant with Farmer support Services
- Rivers
- Provincial boundary
- National Parks
- COMACO Operational Areas



Where COMACO operates



COMACO Operational Areas



Copyright:© 2013 National Geographic Society, i-cubed, Esri, HERE, DeLorme



COMACO processing hubs







2022-2023 business:

- Commodity tonnage purchased: **9,200 tons**
- Farmers purchased from: **55,000**
- Money spent on crops: **3,700,000 USD**
- Turnover 12 months: **6,500,000 USD**







546,252ha
546,252ha
546,252ha



Carbon markets: 2013-2023

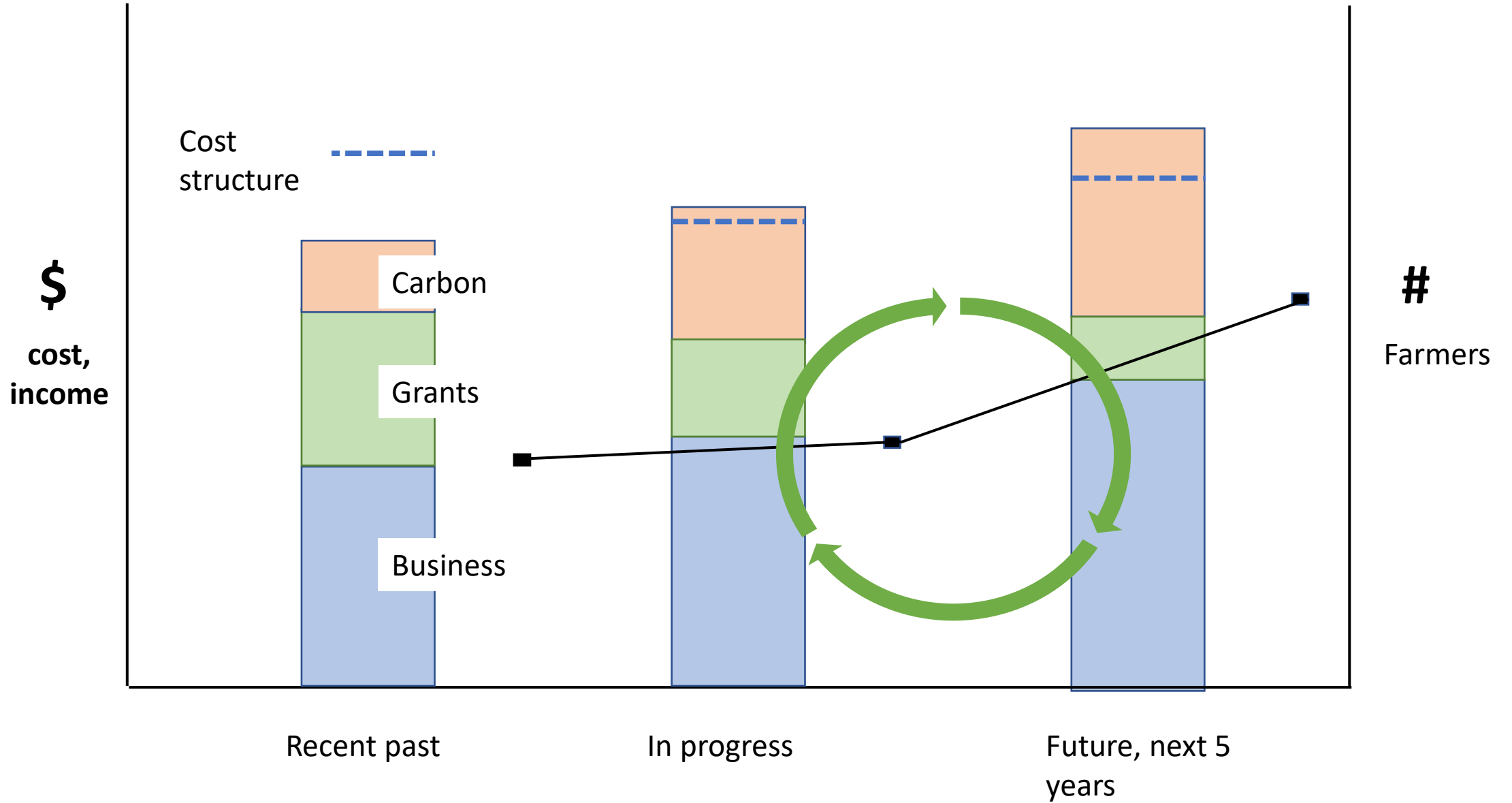
- Total credits verified: **1,638,099**
- Additional credits in pipeline: **2,361,916**
- Total US dollars paid to communities: **4,853,801**
- Total number chiefdoms in carbon program: **46**
- Total hectares under REDD: **546,252**
- Total hectares under agroforestry-based carbon: **177,477**
- Total farmers benefitting: **>400,000**



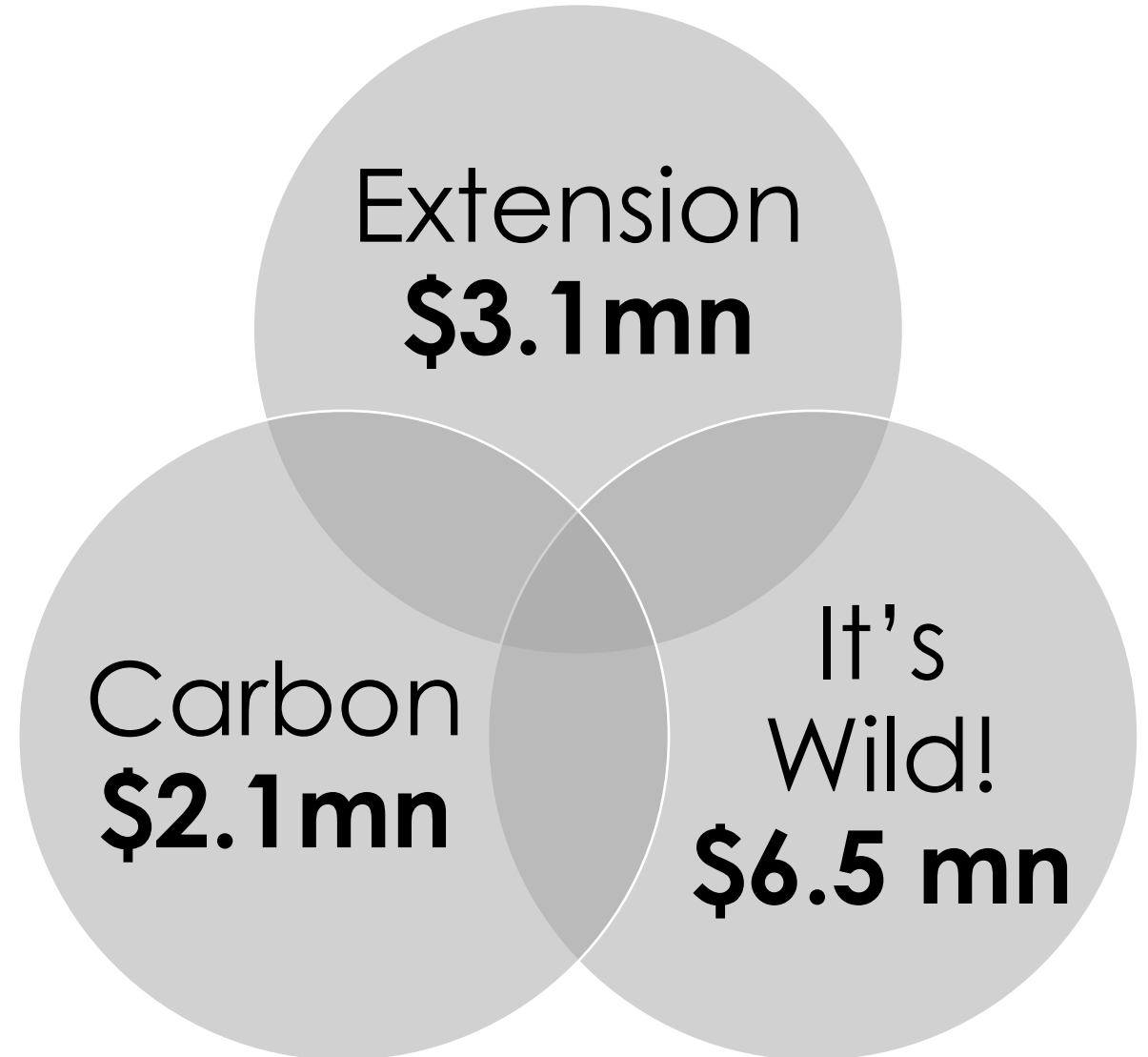
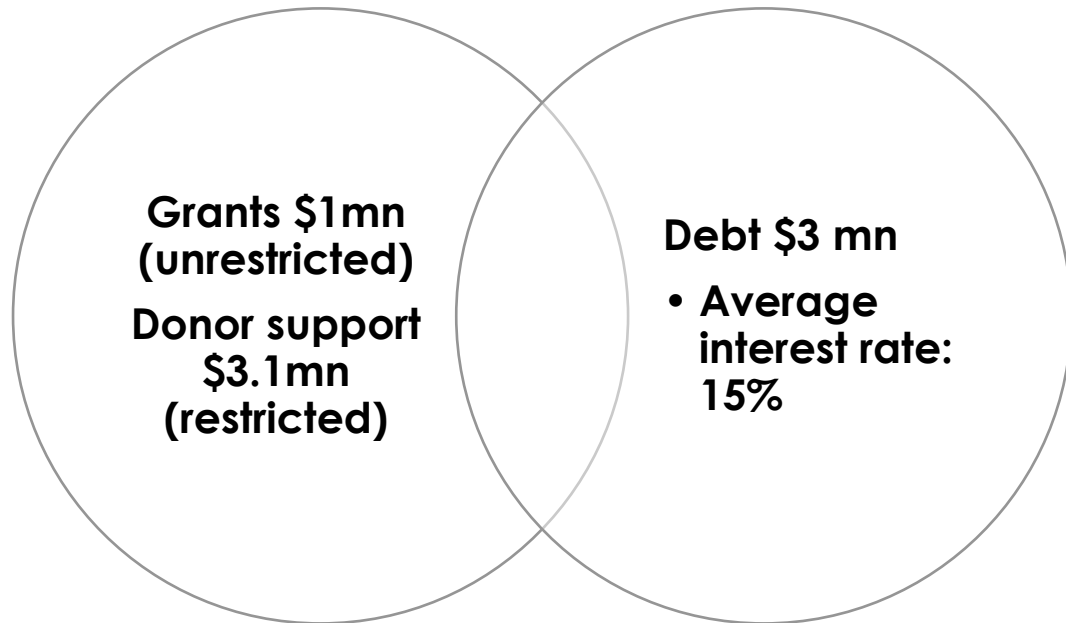




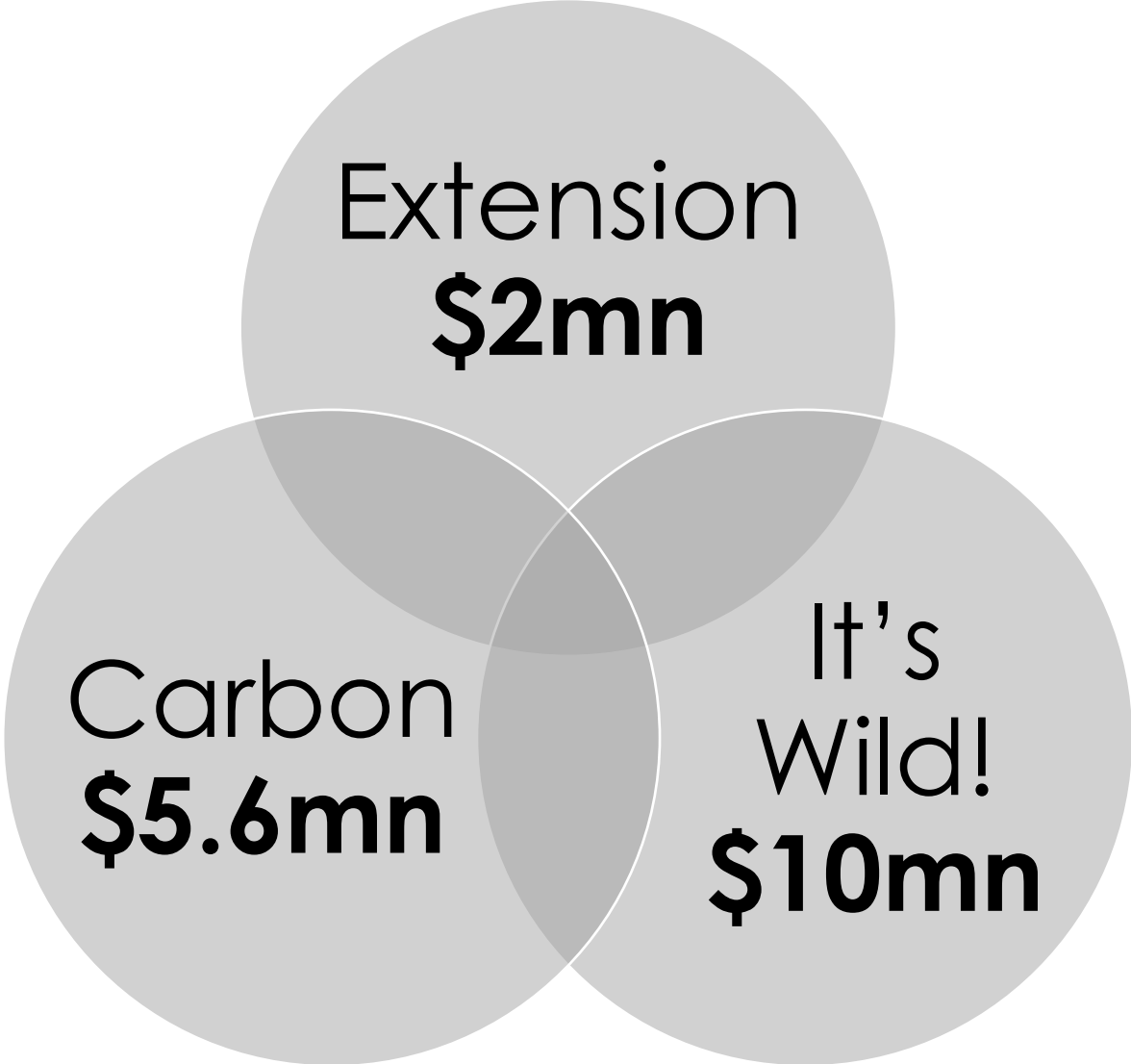
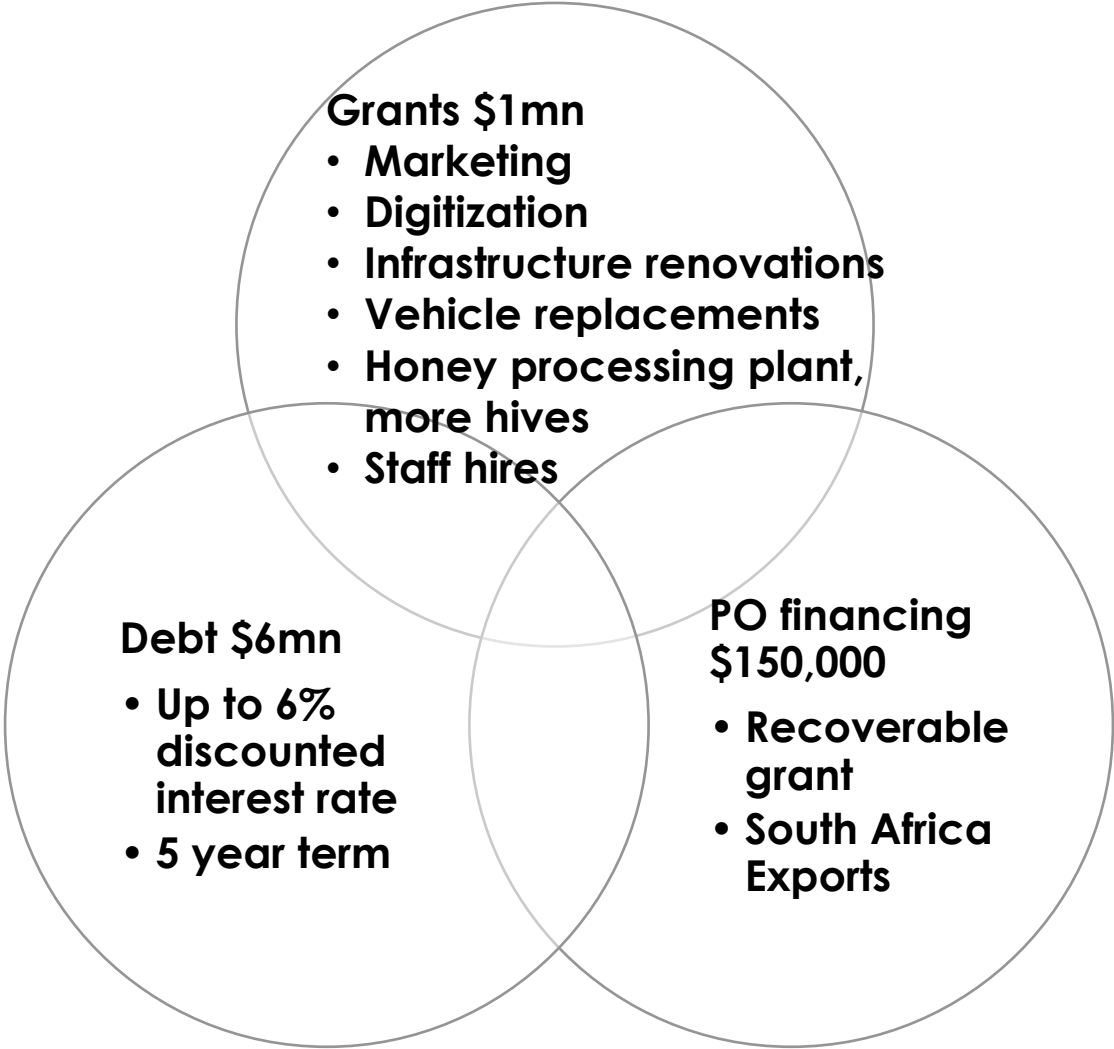
Path to Financial Sustainability and Scalability



Acceleration 2021-2022: Funding & Revenue Streams



Expansion 2023-2027: Funding & Revenue Streams



Outlook



Thank You!

For further information:

Financial Due Diligence Documents

Financial Projections

Term Sheet (Debt)

Contact:

Dale Lewis, CEO

Email: dlewis@itswild.org

Phone: +260-962-646669